

# Calderdale and Kirklees CAMHS

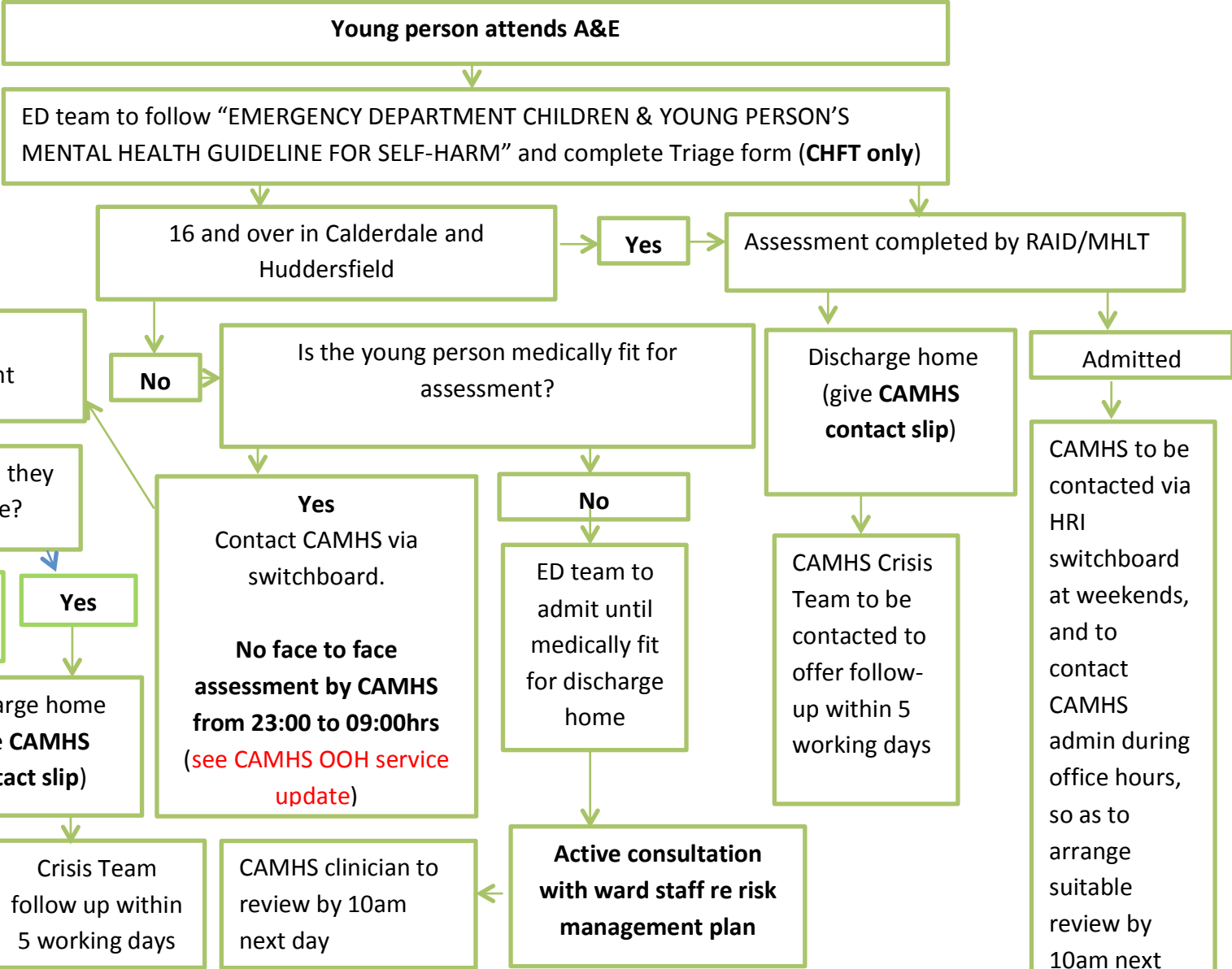
## A & E Contact Processes **Out of Hours**

### Jan 2019

**CAMHS crisis team response time once medically fit for discharge home is 4hrs.**

**RAID/MHLT response time is also 4hrs once medically fit.**

**Contact CAMHS via HRI switchboard: 01484 3342000**



**EVERY ACTION TAKEN MUST BE RECORDED**

# Calderdale and Kirklees CAMHS

## A & E Contact Processes during **working hours**

### Jan 2019

**CAMHS crisis team response time once medically fit for discharge home is 4hrs.**

**Contact CAMHS crisis team via admin on 01422 262 380 (Calderdale) or 01484 343783 (Kirklees).**

**Young person attends A&E**

ED team to follow "EMERGENCY DEPARTMENT CHILDREN & YOUNG PERSON'S MENTAL HEALTH GUIDELINE FOR SELF-HARM" and complete Triage form (**CHFT only**)

Is the young person medically fit for assessment?

**Yes**  
Contact CAMHS crisis team via admin on  
01422 262380 (Calderdale)  
01484343783 (Kirklees)

**No**  
ED team to admit until medically fit for discharge home

Consultation/attend re:  
Assessment and management

Discuss with parents/carers – are they able to keep young person safe?

**No**

**Tier 4 pathway may be needed at this stage**

**Yes**

Agree joint management plan between CAMHS/ Paeds / Adults and admit to appropriate Ward

CAMHS crisis team to review by 10am next day

Discharge home (give **CAMHS contact slip**)

CAMHS Crisis Team to follow up within 5 working days

CAMHS Crisis team to review by 10am next day

**Active consultation with ward staff re risk management plan from CAMHS CRISIS TEAM**

**EVERY ACTION TAKEN MUST BE RECORDED**