

## Guidance on Using the Traceable Memory Monitoring Thermometer for Recording Medication Refrigerator Temperatures

**The device is in two parts connected by a wire:**

- ✓ A probe that is sealed in a miniature bottle
- ✓ A digital display unit

### Position

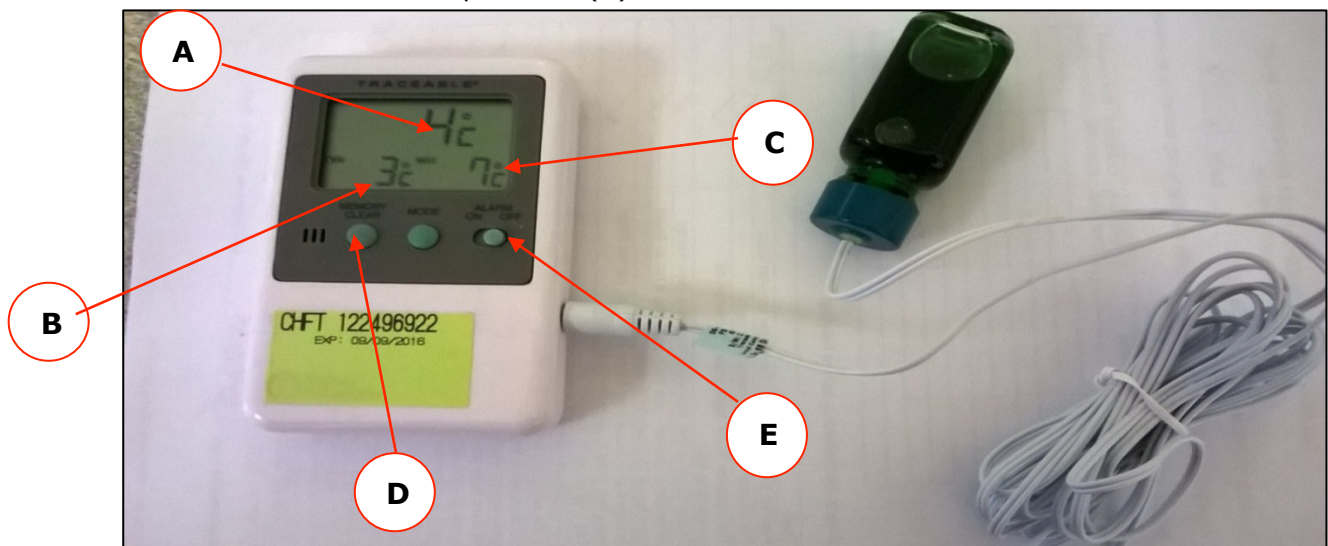
To allow the refrigerator temperature to be monitored without opening the door:

- ✓ Place the miniature bottle on the top shelf of the refrigerator
- ✓ Pass the wire through the refrigerator seal on the door
- ✓ Place the digital display on the top or adjacent to the refrigerator

### Reading the Thermometer

The digital display is set to record the temperature in centigrade and displays the following information:

- ✓ The Actual Temperature (A)
- ✓ The Minimum Temperature (B)
- ✓ The Maximum Temperature (C)



### Reset the device after recording the temperature

- Press the memory clear button once (D)

### Alarm

- The alarm (E) will be turned on after being installed 24 hours
- Alarm will sound if temperature drops below 2°C degrees or rises above 8°C

### Any Problems

If you have any problems/questions using the device, please contact the Pharmacy Department: CRH ext 4218 HRI ext 7123

**DO NOT** touch any of the buttons on the reverse of the device or the mode button

**Avoid** keeping the fridge door open for prolonged periods

If this is not possible record on the fridge monitoring form that the door has been left open

**Anita Hill Medication Safety Officer, April 2016**