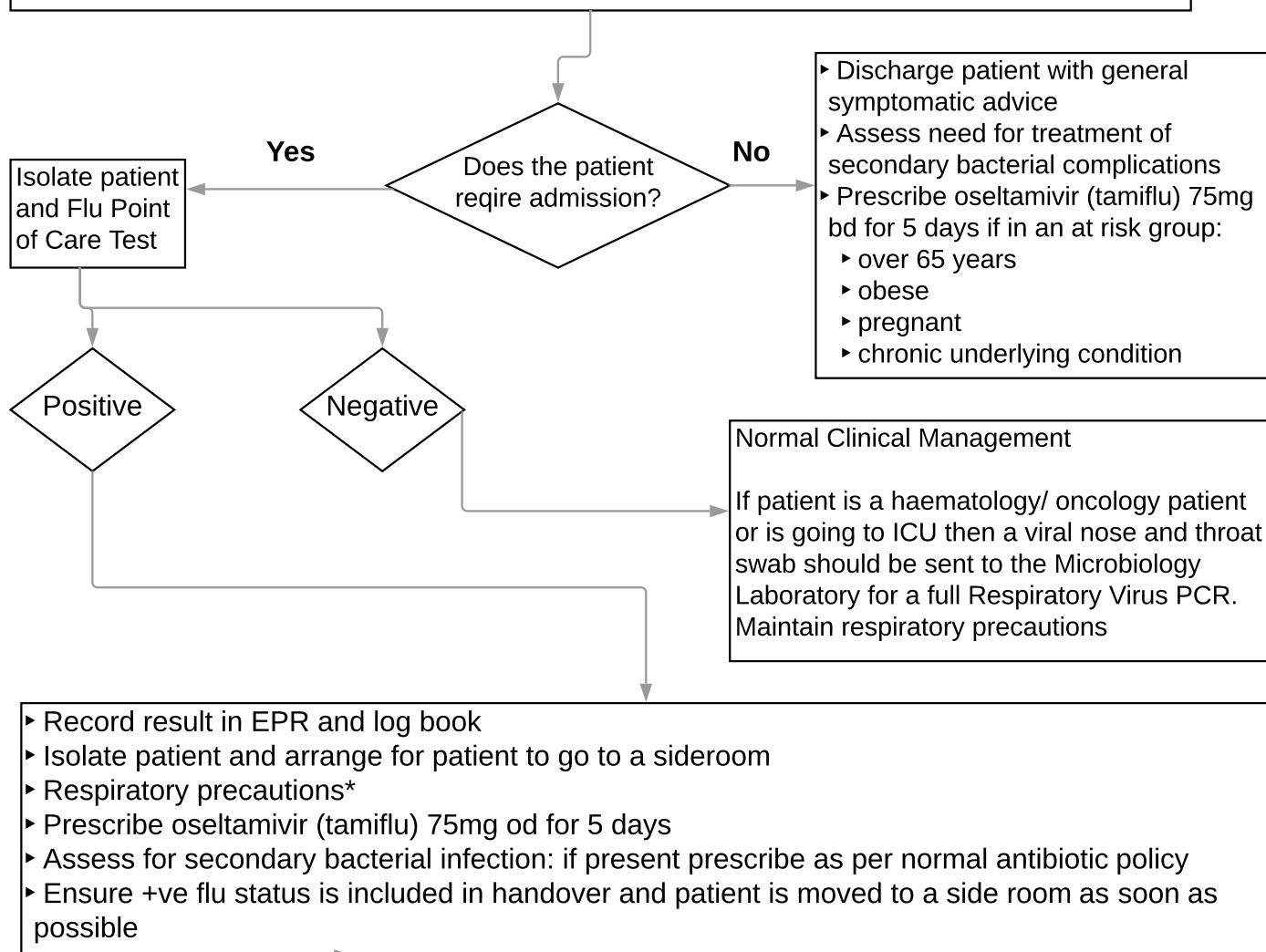


## Influenza Point of Care Testing: ED (Adult)

Assess patient using the below criteria. If patients satisfies any of the below, enter the flowchart:

- A) Flu-like symptoms: Pyrexia (38°C, or history of fever AND flu-like illness (one or more of the following: cough, sore throat, runny nose, myalgia, limb/joint pain, headache)
- B) Acute Exacerbation of chronic lung disease, e.g. COPD, asthma, bronchiectasis
- C) Acute Onset of lower respiratory tract symptoms
- D) Predominant upper respiratory tract symptoms (e.g. runny nose, sneezing, sore throat, cough)

IF THE PATIENT HAS RECENTLY TRAVELLED, CONSIDER OTHER CAUSES INCLUDING MERS



### \*Respiratory precautions:

- patient is isolated in a side room
- surgical face mask worn on entry to room + gloves and apron
- FFP3 mask or hood worn for aerosol generating procedures
- bare below the elbow / good quality hand hygiene