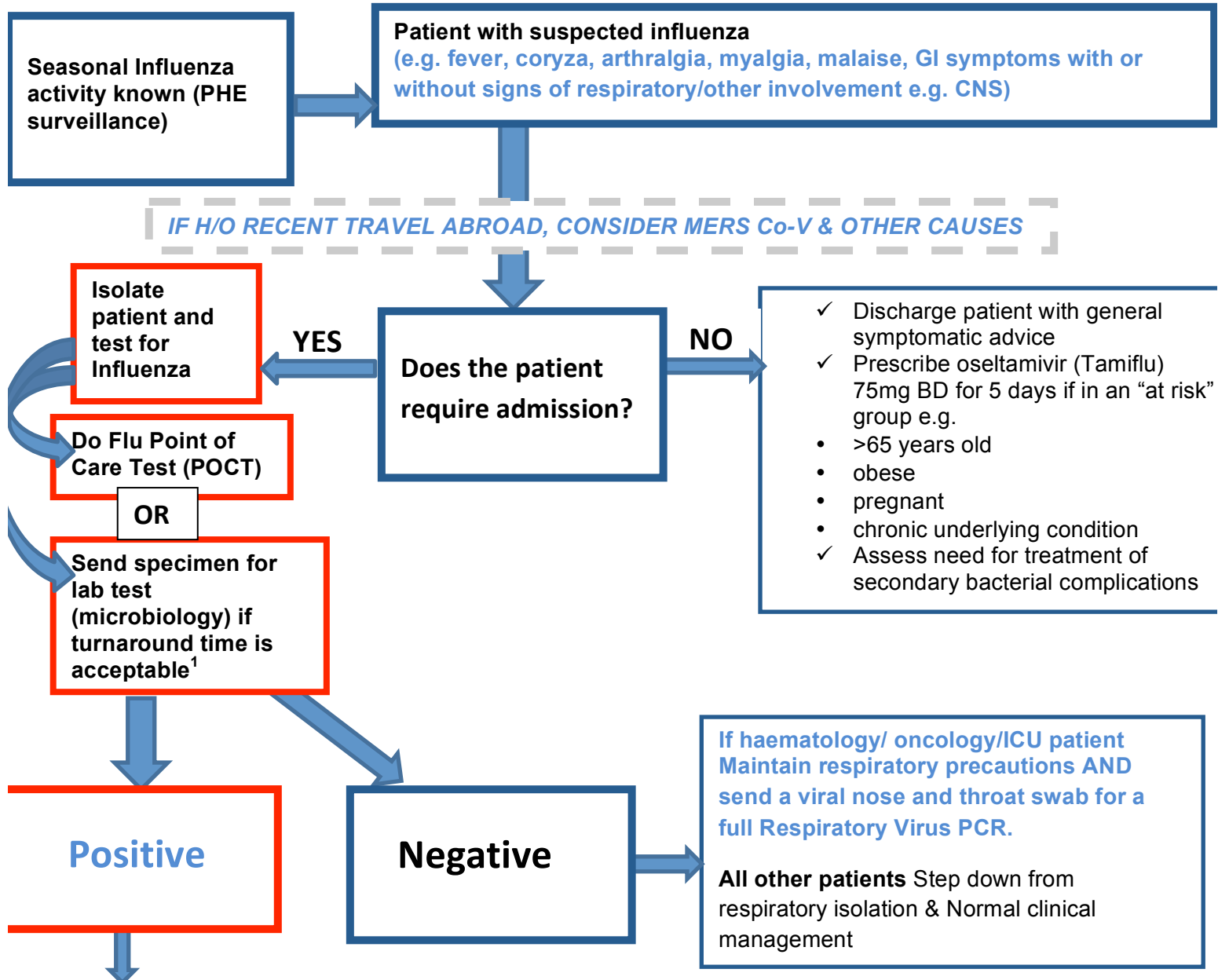


Influenza Point of Care Testing for seasonal Influenza A/B infections



- Record result in EPR and inform requesting clinician who will;
 - ✓ Arrange for patient to go to a side room AND maintain respiratory precautions²
 - ✓ Prescribe antivirals as per PHE guidelines ([PHE_guidance_antivirals_influenza_201819.pdf](#))
 - ✓ Assess for secondary bacterial infection: if present, prescribe as per CHFT antibiotic policy
 - ✓ Ensure +ve flu status is included in nursing and medical handover

1. file:///Y:\IPCDflu%202019-20\poct\Microbiology_schedule_August_19.pdf
2. **Respiratory precautions**
 - patient is isolated in a side room
 - surgical face mask worn on entry to room + gloves and apron
 - FFP3 mask or hood worn for aerosol generating procedures
 - bare below the elbow / good quality hand hygiene